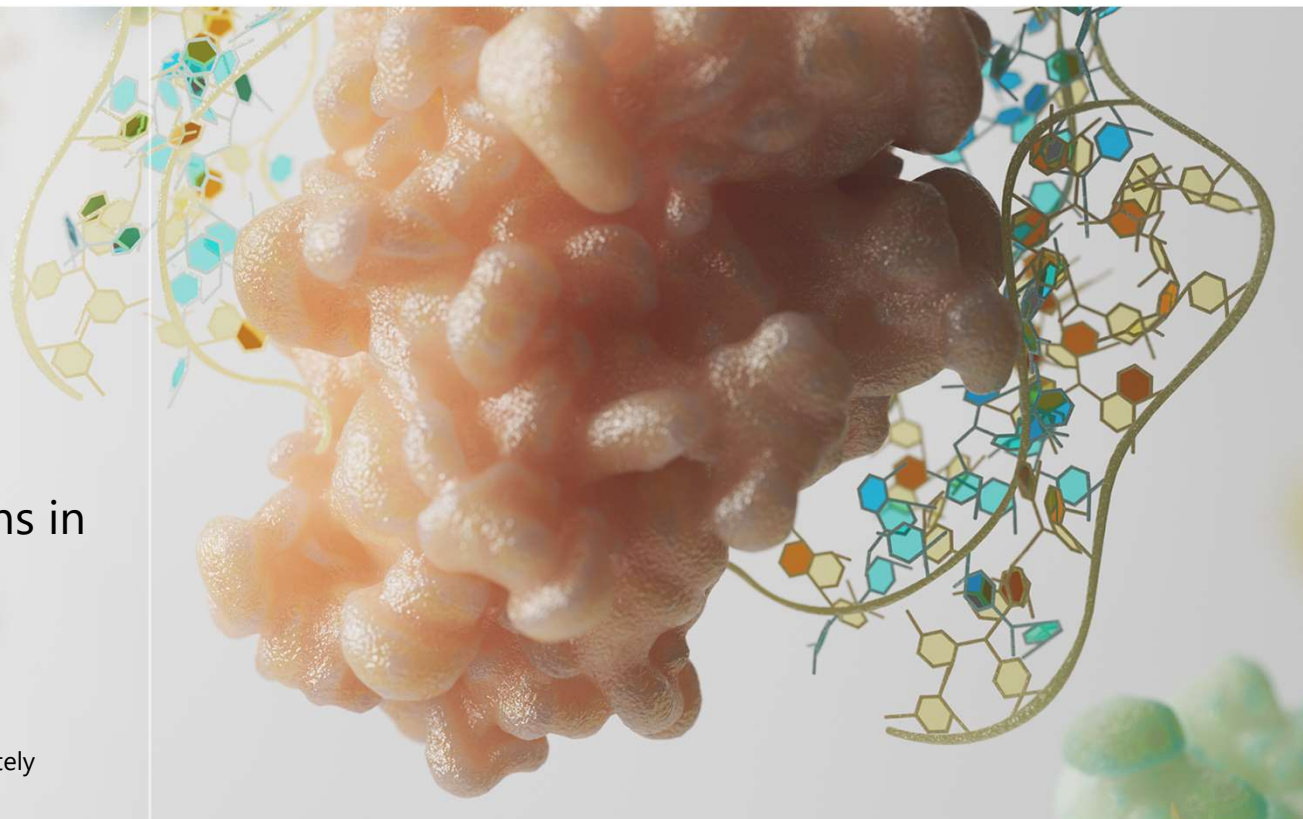




World's First^{*1}

Comprehensive analysis of approximately 7,000 blood proteins in a single test

^{*1} As the first technology to comprehensively analyze approximately 7,000 types of proteins using a small blood sample



Orchestrating a brighter world

NEC

Big data analysis technology
Advanced ICT

+



somalogic

Blood protein
measurement technology



The importance of protein analysis

BluStellar

Genes stay the same, but the body changes

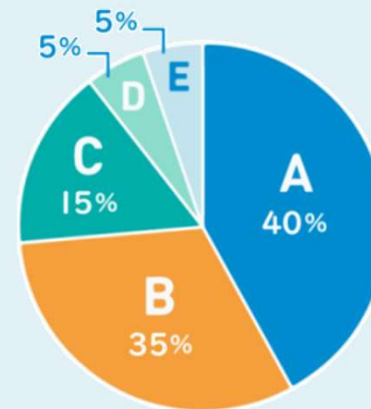


People with the same genes can develop different diseases

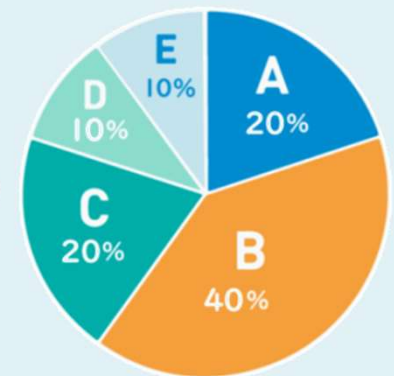
- For example, the Dionne quintuplets, although genetically identical, **had different causes and ages of death:**
 - The eldest sister died at 67 from cancer
 - The second and third sisters are both over 80 and still alive
- Most diseases are caused by **environmental factors, such as lifestyle**, more than by genetics

Protein composition changes with health status

Normal conditions



At the onset of disease



- Organs and tissues are made up of proteins, and **changes in health affect blood protein makeup.**
- By analyzing shifts in protein composition, **we can assess health status and predict future disease risks.**

Fones Visuas Test and Intervention Services

BluStellar



Fones Visuas Test

- Future health risk assessment
- Lifestyle disease risk assessment



Concierge Service

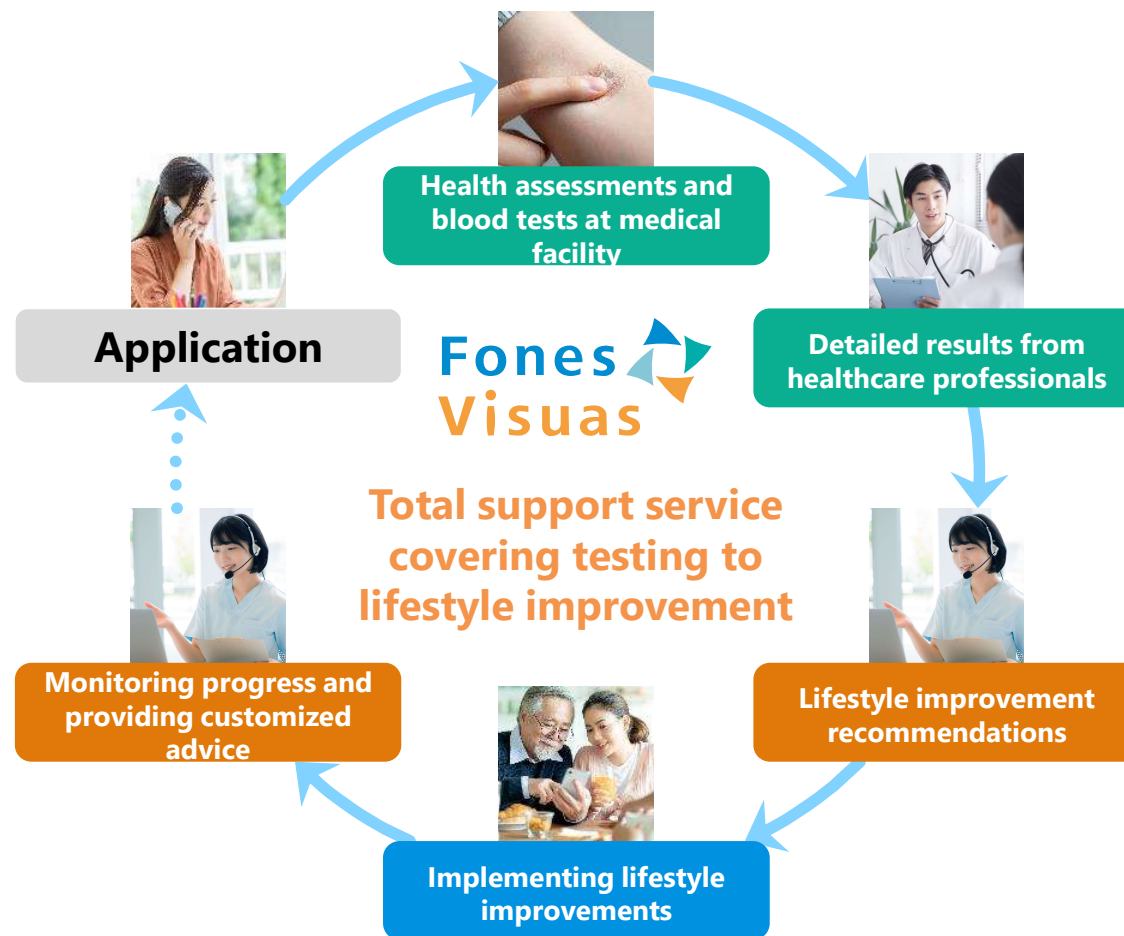
- Health consultation by public health nurses
- Recommendations for improving lifestyle
- Support for achieving behavior change



Mobile App Service

- Interactive content to encourage lifestyle improvements

(Exercise, sleep, mental wellness, diet, oral care, and cognitive enhancement)



Test Service
(Blood test)

Visualization of disease risk prediction and current physical condition^{*1}

Disease risk prediction

Risk of onset within 4 years

- Stroke, cerebral infarction
- Chronic kidney failure
- Myocardial infarction, heart failure

Risk of onset within 5 years

- Lung cancer

Risk of onset within 20 and 5 years^{*3}

- Dementia



Current physical condition

Lifestyle disease risk assessment^{*2}

- Glucose tolerance
- Liver fat
- Effects of alcohol
- Visceral fat
- Cardiopulmonary Endurance (VO2Max)
- Resting metabolic rate

^{*1} Available through a healthcare provider

^{*2} Risk for lifestyle diseases, including diabetes, can be checked through integrated interpretation with other test results.

^{*3} The dementia risk prediction for onset within 5 years is only available for individuals aged 65 and older.

Sample image of test results report

BluStellar

By showing future disease risks as numbers, **it's easier to see how they relate to you personally**

Besides the test, the concierge service and app **give great follow-up support to help improve your lifestyle habits**

It's easy to do with just a blood test

I want my loved ones to try it because **it's a great starting point for improving health and lifestyle habits**

I feel reassured because the tests are **scientifically backed**

Testimonials



Predictive Risk	Results
<p>Dementia Risk - 20 years</p>	<p>LOW HIGH 16 %</p> <p>Relative Risk Coefficient compared to the average in test development</p> <p>Average Your Result 1.22x</p>
<p>Dementia Risk - 5 years</p>	<p>LOW HIGH</p> <p>You are not eligible for this test as you are under 65 years of age</p>
<p>Cardiovascular Risk - 4 years [Type II]</p>	<p>LOW HIGH 27 %</p>
<p>Lung Cancer Risk - 5 years</p>	<p>LOW HIGH 0.9 %</p> <p>Relative Risk Coefficient compared to the average in test development</p> <p>Average Your Result 1.00x</p>
<p>Chronic Kidney Disease Risk - 4 years</p>	<p>LOW HIGH</p> <p>Relative Risk Coefficient compared to the average in test development</p> <p>Average Your Result 0.25x</p>

Current Status	Results
<p>Glucose Tolerance</p>	<p>NORMAL IMPAIRED —</p>
<p>Liver Fat</p>	<p>NO EXCESS FAT SOME EXCESS FAT —</p>
<p>Alcohol Impact</p>	<p>LOWER IMPACT HIGHER IMPACT —</p>
<p>Cardiorespiratory Fitness (VO₂ Max)</p>	<p>GOOD FAIR 36.9 mL/kg/min</p>
<p>Visceral Fat</p>	<p>LOW HIGH 1,846 g</p>
<p>Resting Energy Rate</p>	<p>MORE LESS 1,019 kcal per day</p>

The report can be used to **understand your health status and reassess lifestyle habits**

Service achievements

BluStellar

	Measurement Services	Test and Intervention Services	
		Japan	Overseas
Achievements	Orders received from 9 major Japanese pharmaceutical companies	Service provision started for Daiwa Securities customers Currently in discussion with multiple municipalities for services	Service commenced in Thailand, Hong Kong, and Vietnam Sales activities are being developed primarily in the APAC region
Target Customers	<ul style="list-style-type: none"> • Pharmaceutical companies • Academic and research institutions 	<ul style="list-style-type: none"> • Services for corporate clients or internal employee benefits • Municipalities facing challenges in optimizing medical and nursing care costs 	<ul style="list-style-type: none"> • Health-conscious wealthy individuals overseas
Provided Services	<ul style="list-style-type: none"> • Comprehensive exploration of biomarkers • Verification of efficacy and toxicity 	<ul style="list-style-type: none"> • Total support service covering testing to lifestyle improvement • Support for improving clinical trial efficiency using accumulated protein data (for pharmaceutical companies) 	
Features and Strengths	<ul style="list-style-type: none"> • Technology that simultaneously measures 7,000/11,000 types of protein • Combination with cutting-edge AI technology 	<ul style="list-style-type: none"> • Visualization of future disease risks in numerical form, making them personally relatable 	

Japan (Daiwa Securities Group)

Offering Fones Visuas as a health support benefit to Daiwa Fund Wrap account holders

Exclusive benefits for loyal customers in the era of 100-year lifespans

Daiwa
Securities Group Inc.

Helping to extend the lifespan of your assets

Offering tailored asset management solutions through Daiwa Fund Wrap accounts to meet your objectives and needs

NEC FonesLife

Supporting a longer, healthier life

Visualizing future health risks to support a healthier lifestyle through improved habits

Overseas (Thailand)

Partnership with Bumrungrad International Hospital

- The largest private hospital in Southeast Asia
- More than 520,000 patients annually from 190 countries worldwide
- First in Asia to receive JCI *1 accreditation
Received consecutive recognition seven times for meeting international standards of excellence
- Partnering with the hospital's marketing team to drive sales growth



*1 Joint Commission International
<https://www.jointcommissioninternational.org/>

NEC

\Orchestrating a brighter world