

## FY 2020 Briefing on ESG

# Smart Cities create social value from the perspective of climate change

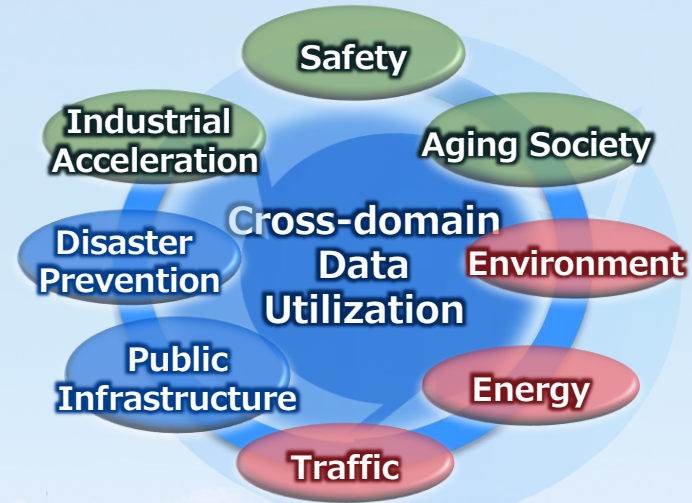
December 5, 2019

Yutaka Ukegawa

Senior Vice President, NEC Corporation

# Smart City biz addresses climate change & social value creation

- Smart Cities with cross-domain data utilization contribute to solving recent diversified social issues in cities



**Sustainable City Society 5.0**

# Issues getting complicated, Resources decreasing

Climate change brings frequent and serious damages



Disaster Prevention



Public Infrastructure

Aging and lack of skilled engineers for maintenance



Increased need to care for elders, children, etc.

Safety

**Recent Diversified social issues in cities**

Aging Society



Lack of labor, budget, and economic stagnation

Industrial Acceleration



Inbound promotion, and regional activation

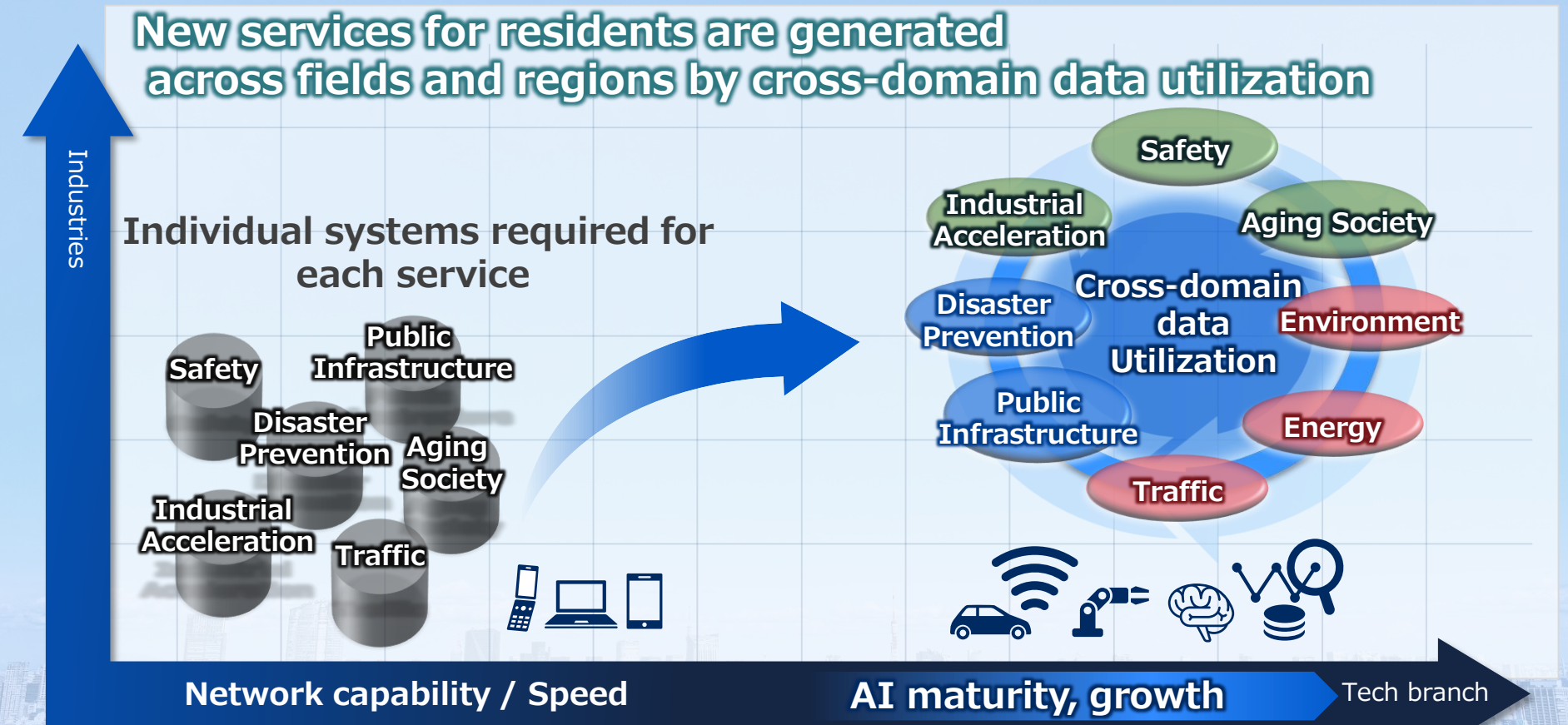
Traffic



Heavy traffic, increasing traffic accidents, budget deficit in local public transport services



# Data technology for Smart Cities



# "FIWARE" - Cross-domain data utilization platform -

## ■ "FIWARE" penetrating globally (Members: 24 countries, 117 cities, 993 Enterprises)

- NEC**
- Joined from development stage. Only Platinum member from Japan
  - Several "FIWARE" use cases in Japan

Expand to other cities and fields

### Innovation of New Services



City Management



Resident Engagement



Eco System

### Cross-domain data utilization Platform



Various data available in the city



- Development started in 2011
- Expanded and localized globally
- NEC joined development in Europe

NEC joins FIWARE Foundation as a Platinum member, 2017

**FIWARE  
Members**※3

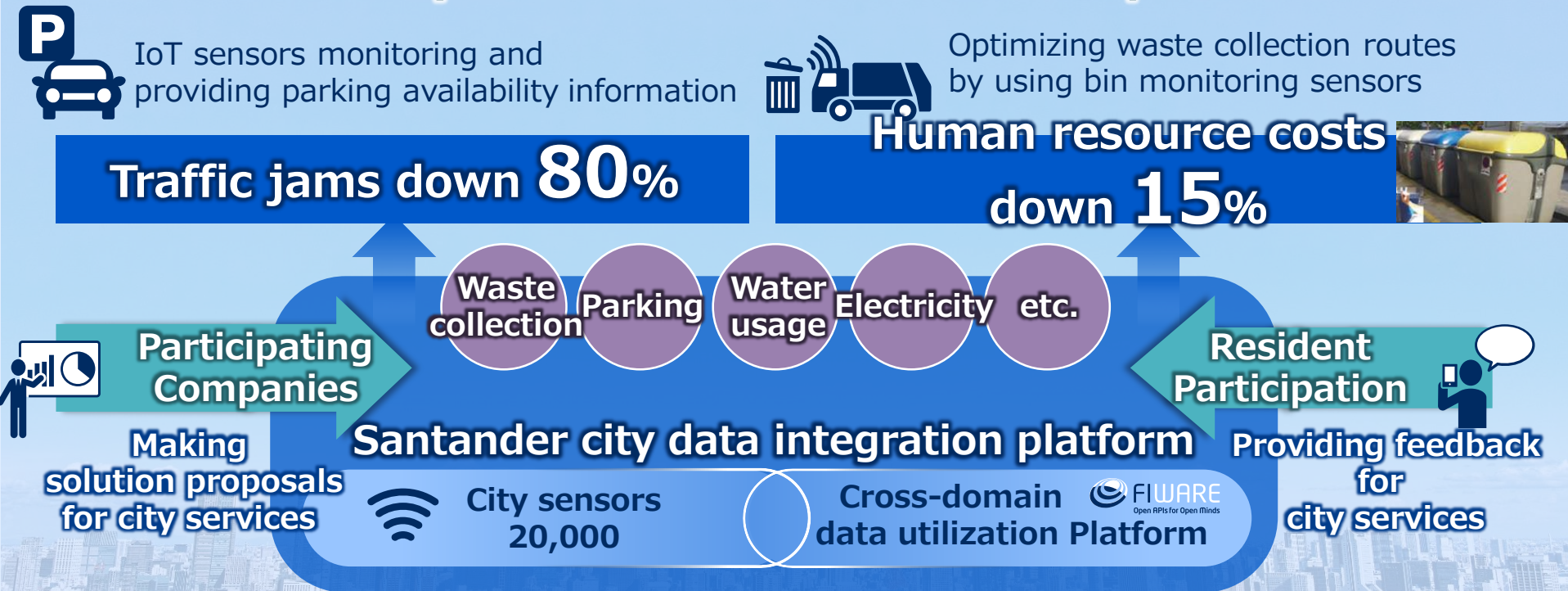
- 993 Enterprises \*1
- 16 FIWARE Lab nodes (Europe · Africa · India · Mexico · Brazil)
- 11 Business hubs (iHub)
- 200 FIWARE Foundation Members\*2
- 2 Accelerator programs
- 24 Countries, 117 Cities \*3

Source \*1) <http://map.fiware.org/> \*2) <https://www.fiware.org/foundation/members/> \*3) <http://oascities.org/list-of-cities/>

# Santander City, Spain



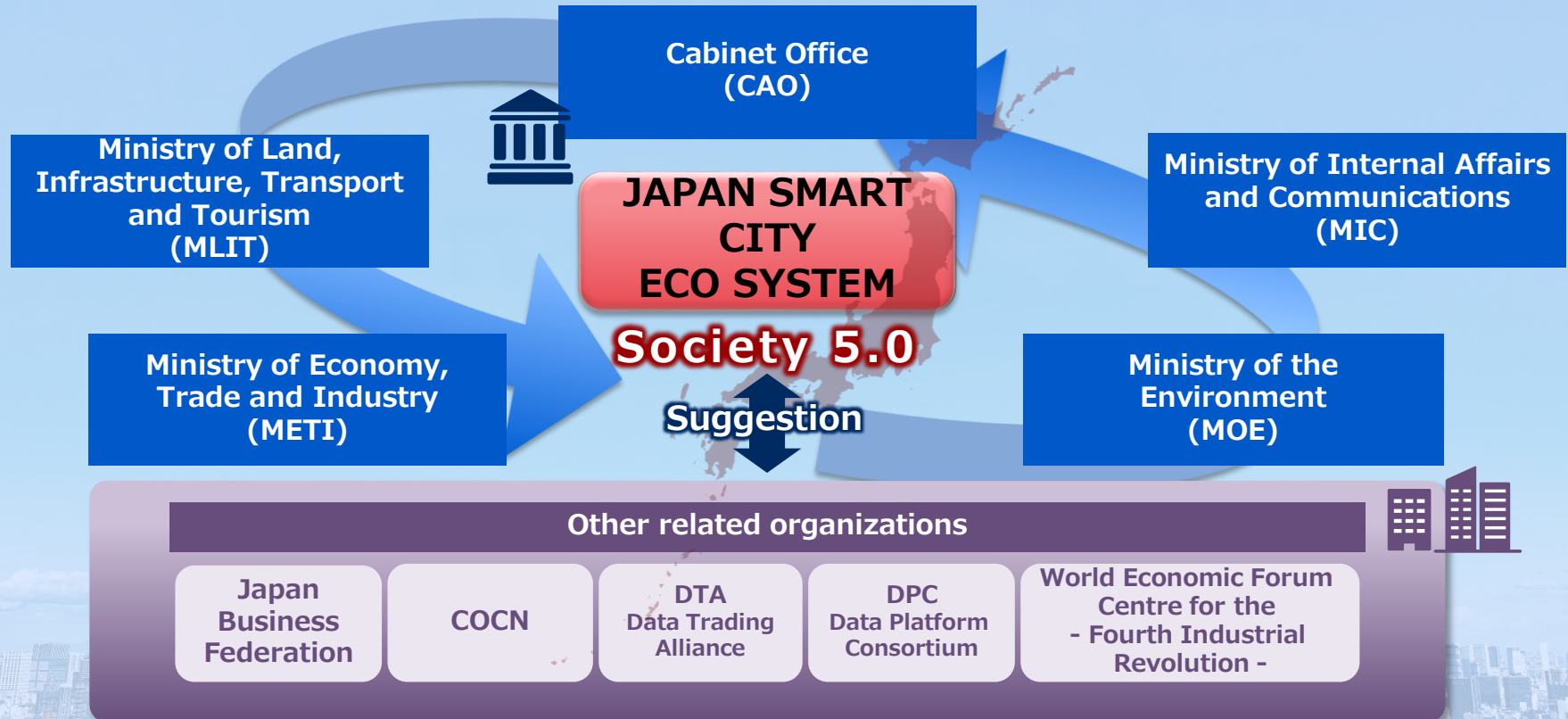
- Reduced traffic jams and enhanced efficiency of waste collection
- Sustainable ecosystem with residents and companies





# Smart Cities in Japan

## Public and private partnerships lead the Smart City discussion



# Overview of NEC Smart Cities

## ■ Acceleration of the Smart City discussion in Japan

### Today's Case Studies

**Takamatsu city, Aso city, Kawasaki city, Kakogawa city**





## ■ Cross-domain data utilization addresses city challenges. Real-time monitoring contributes to mitigate disaster damage.

In February, 2018, MOU for establishment and utilization of Smart City solutions signed among Takamatsu city, NEC, STNet, Kagawa University, Kagawa tech college.

- ✓ **Smart City Takamatsu promotion initiative**  
;more than 60 authorities joined
- ✓ Focus areas in cross-domain data utilization expand Disaster Prevention & Tourism to Welfare & Traffic.



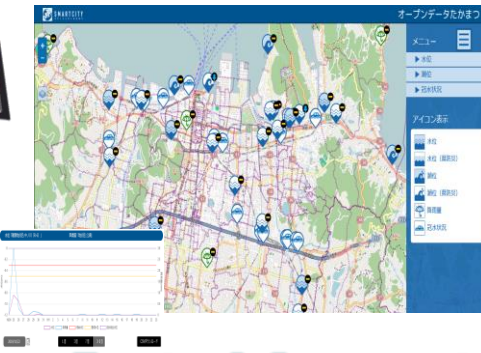
 Monitoring water & tide level enables early warning & evacuation instructions

**City : Rapid decision, Early warning**  
**Residents : Visualized disaster information**

### Takamatsu city Dashboard



### Dashboard for residents



**Visualization of real-time disaster info generates collaboration among neighboring areas**

### Disaster Prevention

#### Tourism

Rental cycle route analysis captures new popular spots.  
⇒Develop new tourism spots.

#### Welfare

Collecting senior's vital data with wearable IoT sensors.  
⇒Virtual care promotes senior care / illness prevention.

#### Traffic

Analyzing local governments and private sector traffic accident data ⇒Point out dangerous spots for traffic accidents.

## Real-time volcanic activity information from harsh environmental conditions in Mt. Aso contributes to tourism

Comprehensive cooperation with three parties consisting of Aso city, Aso Volcano Museum and NEC signed an agreement pact (July 18, 2018)

Secure, Safer, and Sustainable city creation



Data from observing & monitoring crater utilized for disaster related measures and research

Provide 24h 365d volcanic activity information



For monitors



Monitoring 24H×365D



For tourists



Observe crater status





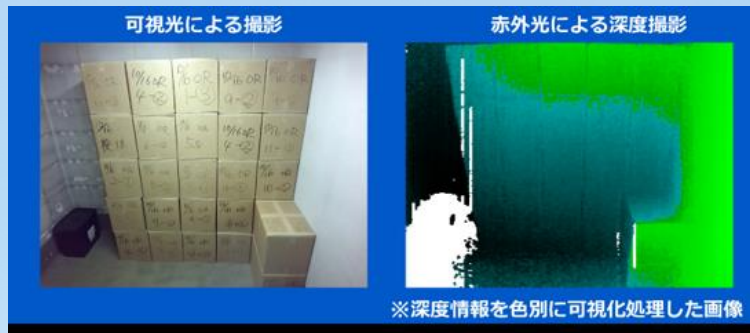
- Conducted PoC for optimizing collection routes for medical waste
- 9.2% mileage reduction alleviates carbon emissions and driver shortages

NEC & Kawasaki City completed research on advanced resource recycling with IoT technologies in Kawasaki Eco Town in May, 2018

※1: Estimation

- Calculate waste amounts at hospital storage with camera image analysis

- Simulate the optimum route to clinics nearby by calculating the remaining truck capacity
- Maximize usage of truck capacity



Picking up waste based on requests from hospitals/clinics

Optimizing truck routes with data analysis



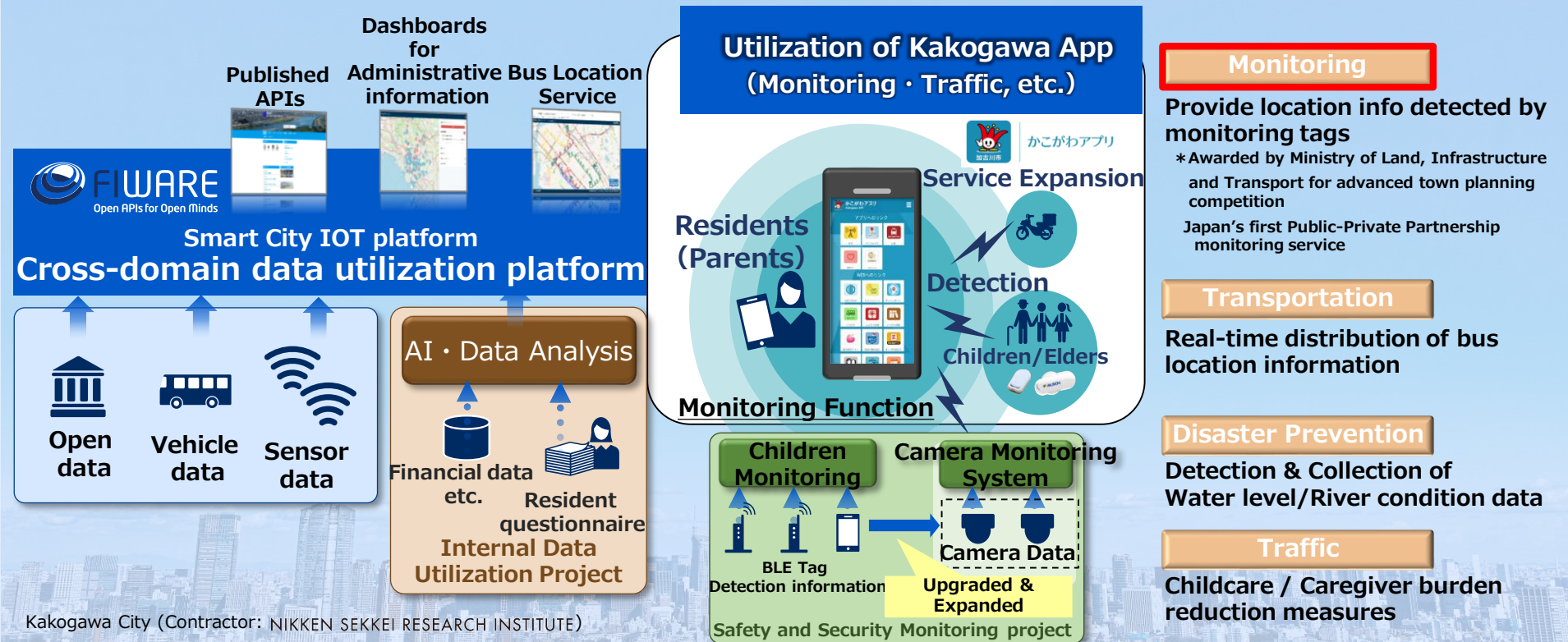
## Reduce mileage by up to 16% by cooperating with multiple vendors

NEC & Kawasaki City identified outcome of AI & platform utilization for optimization in waste collection transportation and processing, May 2019



- Data\* utilization contributes to city safety and security
- Information provision service for residents on the “Kakogawa App”

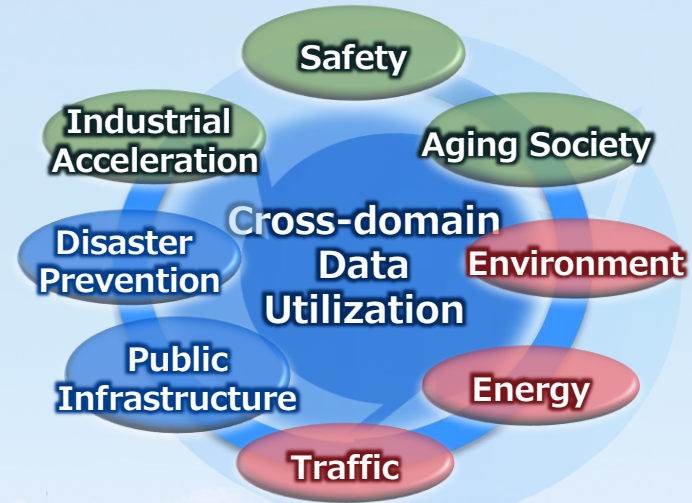
\* Monitoring, Transportation, Disaster Prevention, Welfare



Kakogawa City (Contractor: NIKKEN SEKKEI RESEARCH INSTITUTE)

# Smart City biz addresses climate change & social value creation

- Smart Cities with cross-domain data utilization contribute to solving recent diversified social issues in cities



**Sustainable City Society 5.0**



# Orchestrating a brighter world

NEC brings together and integrates technology and expertise to create the ICT-enabled society of tomorrow.

We collaborate closely with partners and customers around the world, orchestrating each project to ensure all its parts are fine-tuned to local needs.

Every day, our innovative solutions for society contribute to greater safety, security, efficiency and equality, and enable people to live brighter lives.