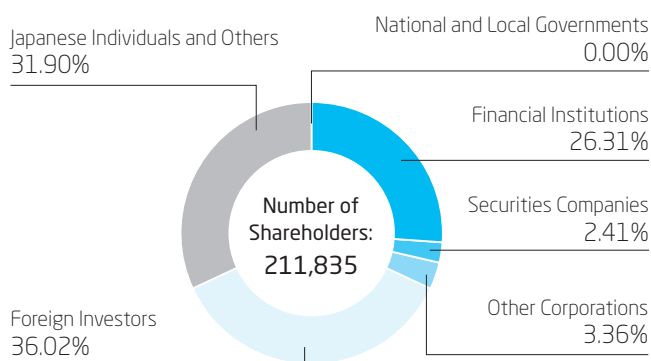


Corporate Overview

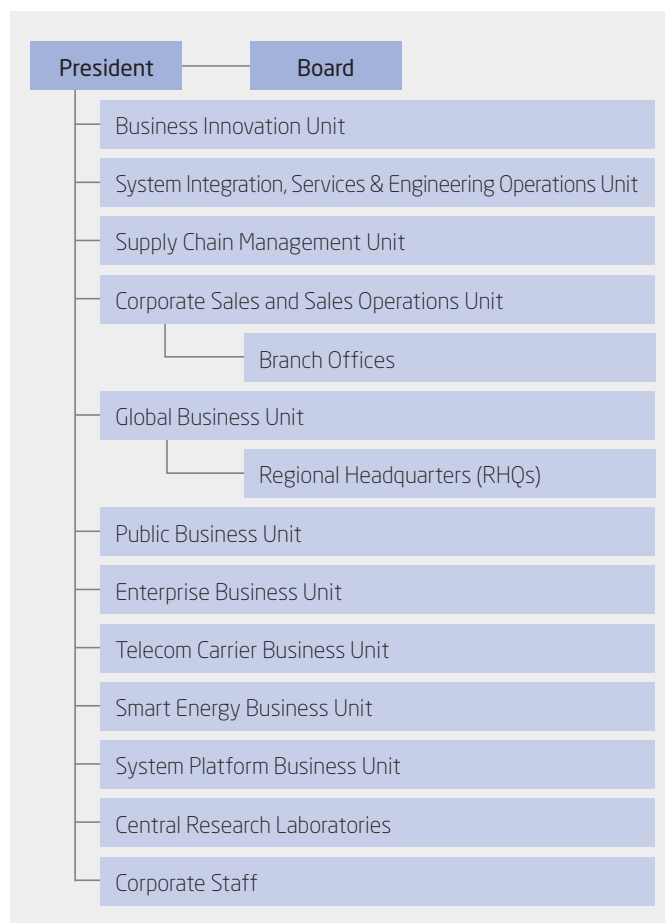
Company Name	NEC Corporation
Address	7-1, Shiba 5-chome, Minato-ku, Tokyo 108-8001, Japan
Established	July 17, 1899
Number of Employees	98,882 (NEC Corporation and consolidated subsidiaries) (As of March 31, 2015)
Shares of Common Stock Issued	2,604,732,635 shares (As of March 31, 2015)
Stock Exchange Listing	Tokyo (Stock Code: 6701)
Transfer Agent for Common Stock	Sumitomo Mitsui Trust Bank, Limited 1-4-1, Marunouchi, Chiyoda-ku, Tokyo

Composition of Shareholders (Percentage of shares)

(As of March 31, 2015)



Organization Chart



Major Shareholders (Top 10) (As of March 31, 2015)

Name of Shareholders	Number of Shares Held (Thousands of shares)	Shareholding Ratio (%)
The Master Trust Bank of Japan, Ltd. (Trust Account)	129,161	4.97
Japan Trustee Services Bank, Ltd. (Trust Account)	105,848	4.07
NEC Employee Shareholding Association	51,816	1.99
The Chase Manhattan Bank 385036	47,660	1.83
Nippon Life Insurance Company	41,977	1.62
Sumitomo Life Insurance Company	41,000	1.58
The Bank of New York Mellon SA/NV 10	36,570	1.41
Credit Suisse Securities (USA) LLC SPCL. For EXCL.BEN	32,679	1.26
Japan Trustee Services Bank, Ltd. (Trust Account No. 4)	32,476	1.25
State Street Bank West Client – Treaty 505234	32,078	1.23

Note: The shareholding ratio is calculated by excluding the number of treasury stock (5,852,991 shares).